



AUCTION

LEADING THE INDUSTRY SINCE 1945

Monday – May 7, 2018 – 5:30 PM

Vacant Land

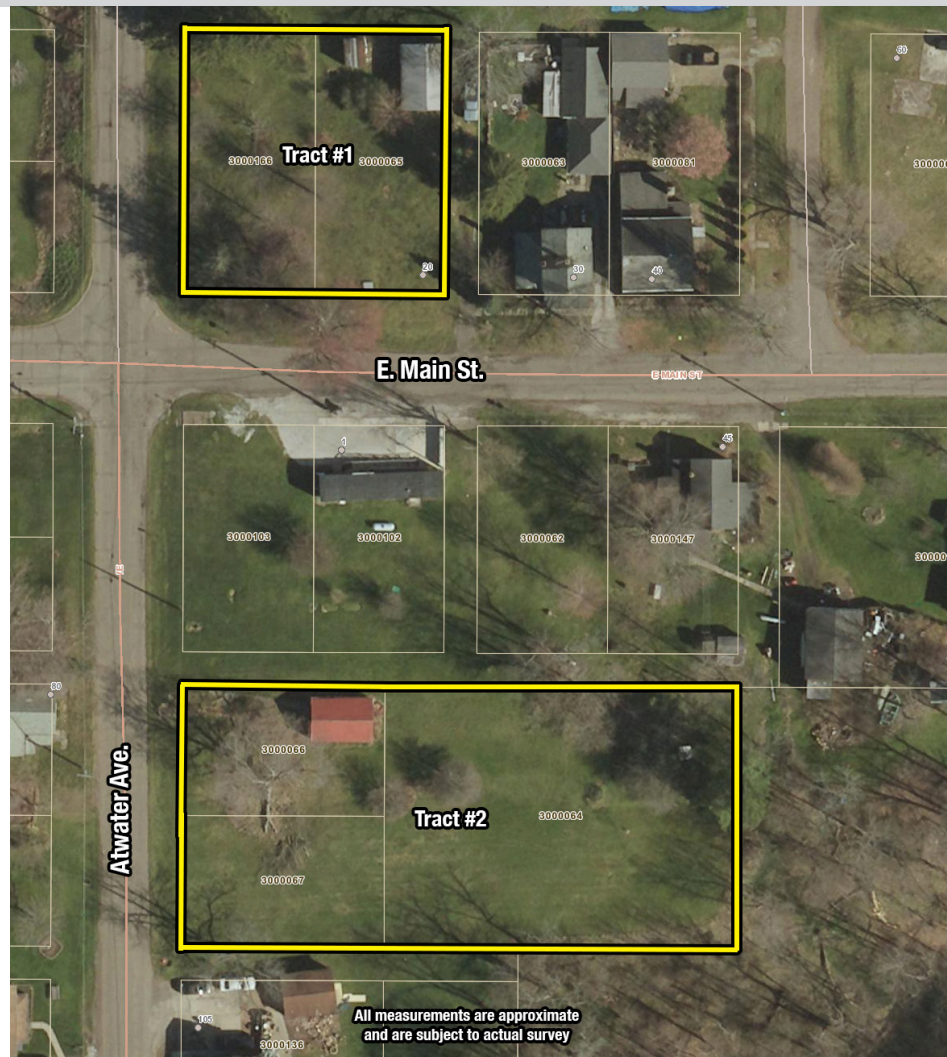
BUILDING LOTS & GARAGES

County Sewer To Both – Limaville Village – Stark Co., OH – Marlington Schools

Absolute auction, all sells to the highest bidder(s) on location:

20 E. Main St., Limaville, OH 44640

Directions: Take SR 183 north of Alliance, OH or south of SR 224 to Main St., then west to address. Watch for KIKO signs.



Information is believed to be accurate but not guaranteed.



330.455.9357 • kikoauctions.com





KIKO AUCTIONEERS

2722 Fulton Dr. NW, Canton, OH 44718
kikoauctions.com

Monday – May 7, 2018 – 5:30 PM

VACANT LAND

Building Lots & Garages
County Sewer To Both
Limaville Village – Stark Co., OH
Marlington Schools

20 E. Main St., Limaville, OH 44640



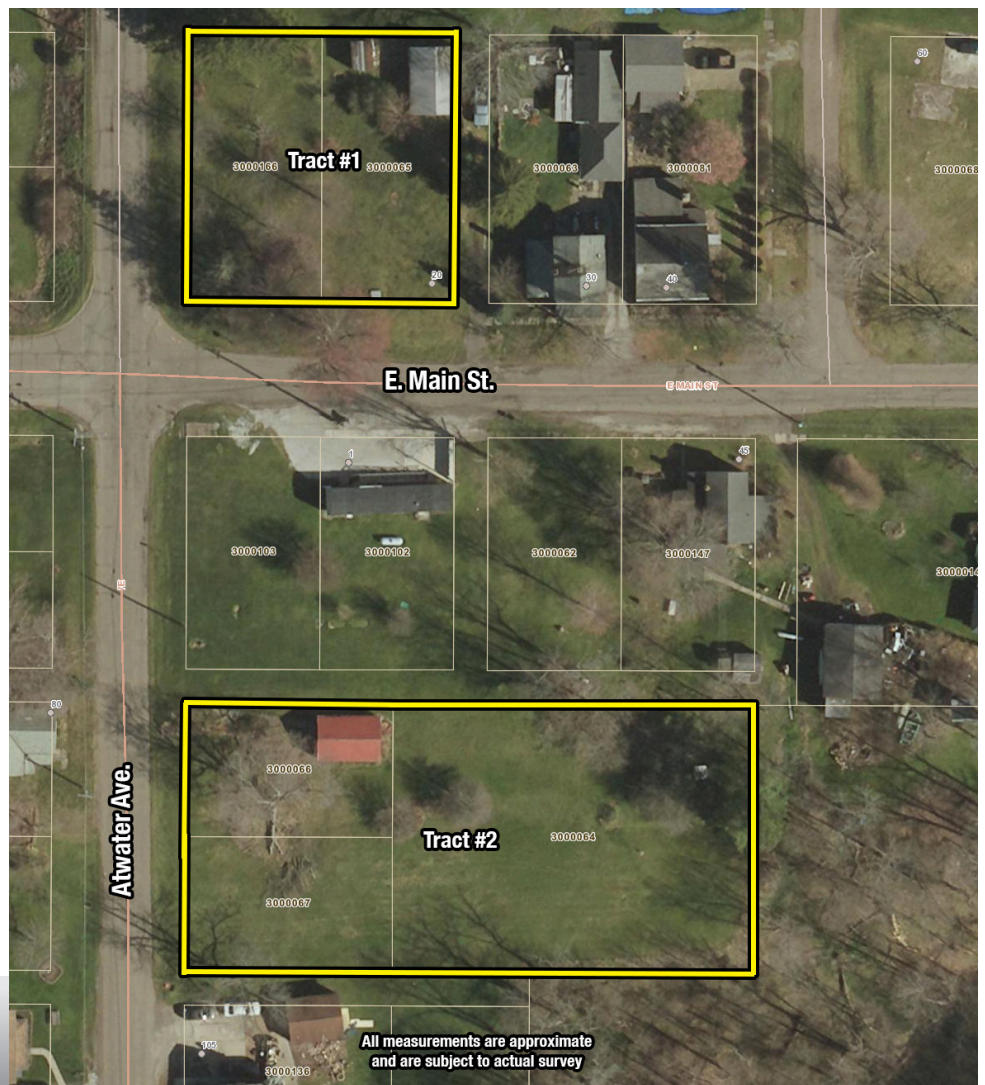
Members – State and National Auctioneers Association



TRACT #1: (20 E. Main St.) Features two adjoining residential lots w/ 1.5-car garage. Gas and sewer at the street. Corner tract. Taxes are \$97.92 per half year.

TRACT #2: (Atwater Ave.) Features three adjoining lots w/ small pole barn. Sewer at the street. Taxes are \$113.10 per half year. Nearly 3/4 acres total.

TERMS ON REAL ESTATE: 20% down auction day, balance due at closing. A 10% buyer's premium will be added to the highest bid to establish the purchase price, which goes to the seller. Any desired inspections must be made prior to bidding. All information contained herein was derived from sources believed to be correct. Information is believed to be accurate but not guaranteed.



All measurements are approximate and are subject to actual survey



Auctioneer/Realtor®

GEORGE P. KIKO

330-418-1095

george@kikocompany.com



330.455.9357 • kikoauctions.com

